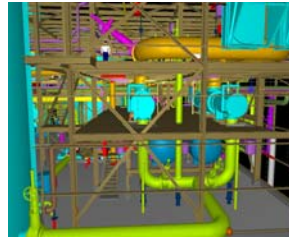
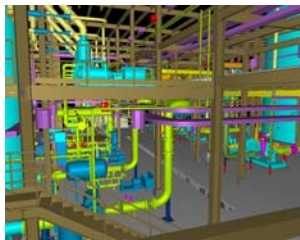
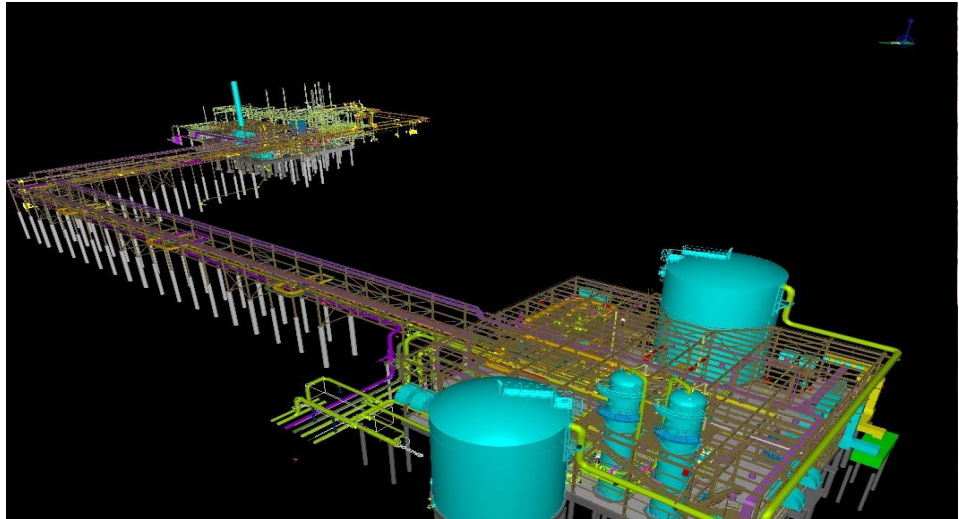


## MOSAIC POTASH – STAGE 1 EXPANSION

Mosaic Potash

Belle Plaine, Saskatchewan



### Project Description

KGS Group was retained by Mosaic Potash to carry out the Front End Engineering work, Detailed Design and equipment procurement for a refinery expansion at the Belle Plaine, Saskatchewan potash mine. The entire project was modeled using Bentley AutoPlant software for the Mechanical & Electrical components and Tekla Structures for the structural steel. In addition to detailed piping fabrication isometric drawings, KGS also provided structural steel shop drawings.

The project consisted of:

- A new greenfield Process Water Building
- An expansion to the existing powerhouse structure and installation of a new 275,000 lb/hr package boiler
- Pipe rack and utilities to service the new facilities
- New pumphouses at several of the mine cluster sites
- Heat recovery equipment and piping

This \$100 million fast-track project was completed for plant start-up in Spring 2011.