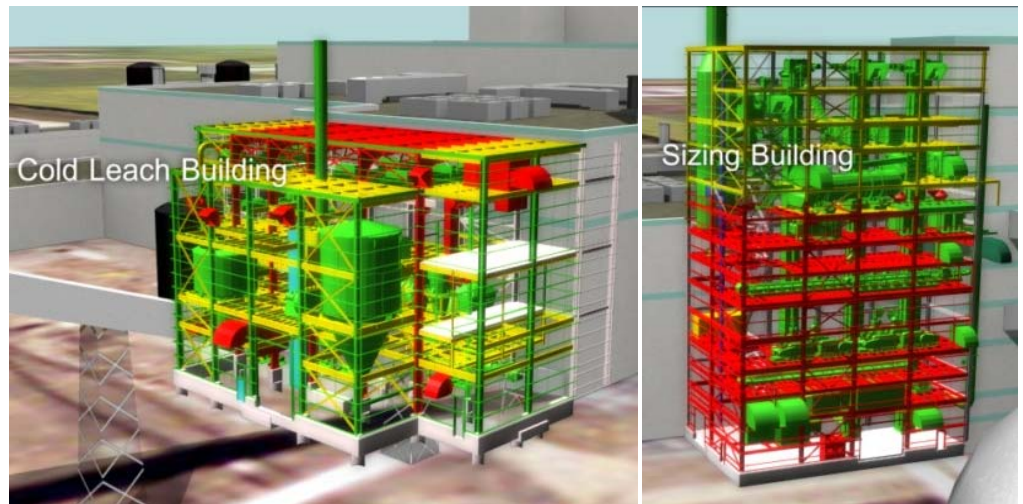


PHASE II EXPANSION – SIZING & COLD LEACH ADDITIONS

Mosaic Potash

Belle Plaine, Saskatchewan



Project Description

KGS Group was retained by Mosaic Potash to carry out the detailed structural design for a major addition to the Sizing and Cold Leach systems at the Belle Plaine Potash Mine facility. The structural and miscellaneous steel were modeled using Tekla Structures software while the plant equipment was modeled in AutoCad and Bentley AutoPlant to minimize interferences during construction. KGS Group's services also included provision of fabrication shop drawings for the structural and miscellaneous steel as well as full-time site supervision of the construction. The \$120 million project was completed in 2010.