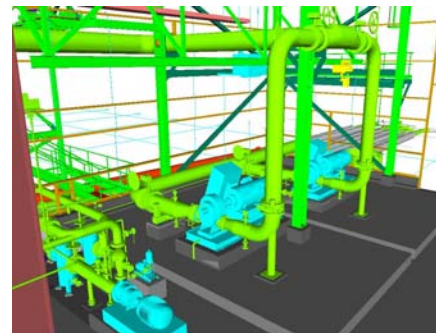
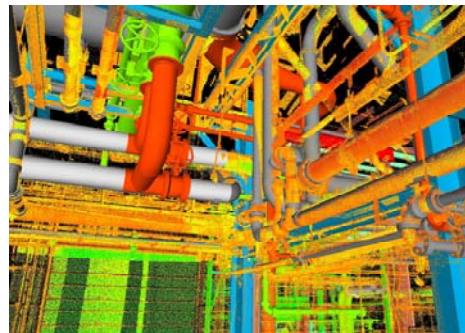
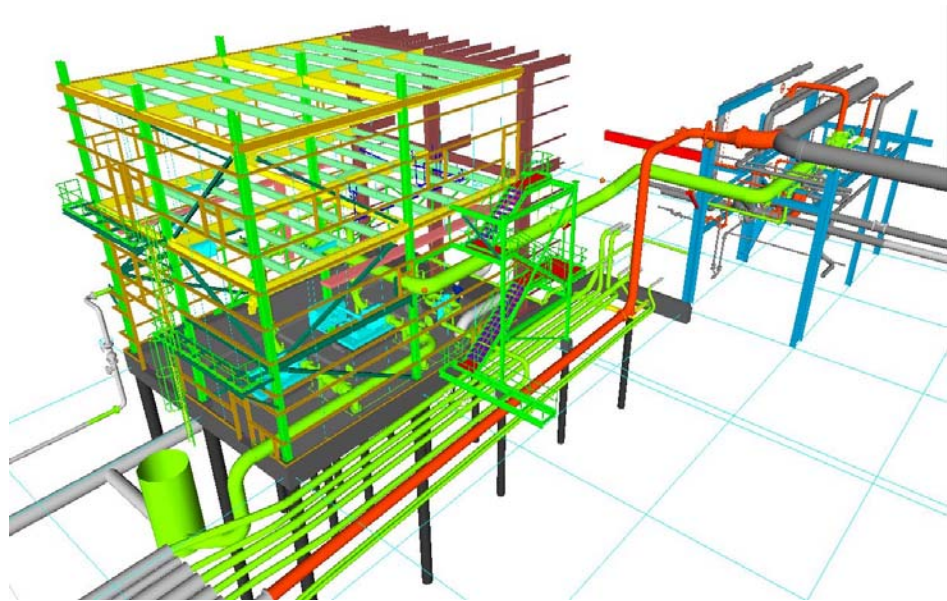


# MOSAIC POTASH – RAW FEED UPGRADE

Mosaic Potash

Belle Plaine, Saskatchewan



## Project Description

KGS Group was retained by Mosaic Potash to perform the detailed design of a Raw Feed system pump upgrade and building expansion. Process mechanical engineering included the installation of new Raw Feed Pumps 4/5, with associated piping tie-ins to the refinery Raw Feed system, and installation of a new Bad Water Pond Pump with vacuum priming system. The building expansion included structural engineering of building and equipment foundations, building superstructure and major pipe supports, and design of upper level office spaces with associated mechanical services.

The project was designed using a 3D model, with laser scanning of the adjacent refinery areas used to model the process piping tie-ins.